



FINXL

THIS TIME IT'S DIFFERENT

CERTIFICATION PROGRAM IN

FINANCIAL PLANNING & ANALYSIS (FP&A)

LEARNING

APPLICATION

EMPLOYMENT

COURSE HIGHLIGHTS

- ✔ The **#1 Course** to Land a Job in **Financial Planning & Analysis**
- ✔ Certified Financial Planning & Analysis Course with **100% Placement assistance**
- ✔ **3/6 months internship** with an Analytics firm
- ✔ Gain hands-on, **practical experience** during training, similar to **real job in FP&A profile**
- ✔ 80% of the **Real-time industry used Case study**-based learning
- ✔ Our trainers: FP&A working professionals with **13+ years of experience**
- ✔ A guide to **over 100** frequently asked **Financial Analyst questions and their answers**
- ✔ Learn best **Planning, Budgeting, Forecasting & Reporting** practices used in industry
- ✔ Prepare a **company's Budget from Scratch**
- ✔ Build **5 financial models from scratch** on your chosen Listed/Private companies
- ✔ Be part of our **Global Financial Analyst alumni network**
- ✔ Dedicated **Placement Manager** with **1-on-1 mentorship**

FEATURES



INSTRUCTOR-LED SESSIONS

110+ Hrs of Offline/Online Live Instructor-led classes (2.5 Hours sessions each on Saturday & Sunday) / (2.5 Hrs. Sessions Mon-Thurs.)



CERTIFICATION

Get 3 Industry recognised certifications in one course: **FP&A, Financial Modeling and Power BI**. You can show them separately in your resume



INTERVIEW PREPARATION

Prepare you for **Financial Analyst Interview process** in any top-notch **global Analytics Firm**



RESUME PREPARATION & JOB PORTAL UPDATION

Our expert will assist you in **resume building and job portal updation**



REAL TIME CASE STUDIES

Live case studies for each financial topics to ensure that learner can understand it thoroughly



LIFETIME ACCESS

You get **lifetime access** to the **FINXL LMS** which includes videos, excel spreadsheets, presentations, ebooks, quizzes and case studies



ASSIGNMENTS

Each session will be followed by a **practical assignment**



FORUM

Our career square forum is the most dynamic platform to **connect with expert** across the globe

WHAT IS FINANCIAL PLANNING & ANALYSIS?

Financial planning and analysis (FP&A) is the budgeting, forecasting and analytical processes that support an organization's financial health and business strategy. The FP&A discipline combines in-depth analysis of both operational and financial data to help align business processes and strategies with financial goals, and to evaluate progress toward those goals.

WHY FP&A TRAINING REQUIRED?

FP&A firms do not entertain freshers due to lack of practical exposure of Budgeting, Planning, Forecasting, Reporting & Analysis required for job. Skilled FP&A professionals demand are growing exponentially globally and consequently huge demand in outsourcing job market like India.

APPLICATION



Investment
Banking



Asset/Wealth
Management



Corporate
Finance



IT & ITES

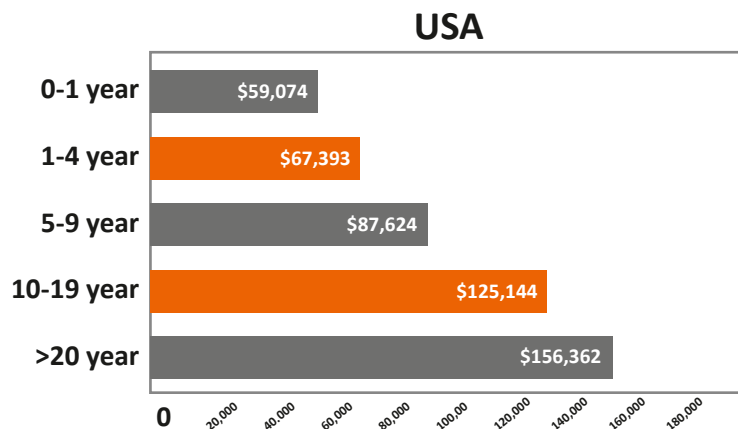
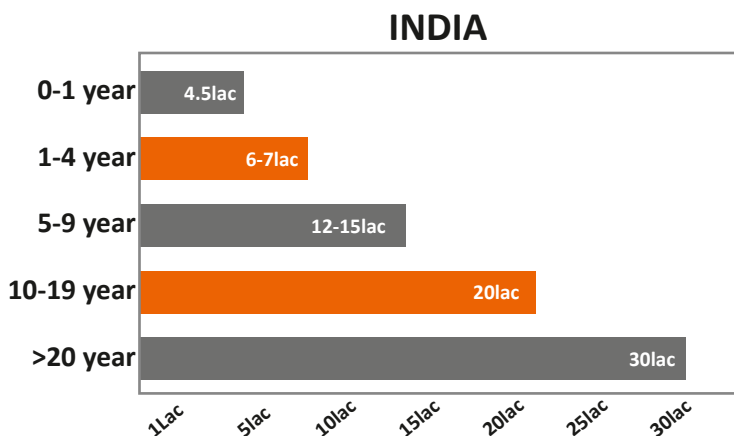


Shared
Services

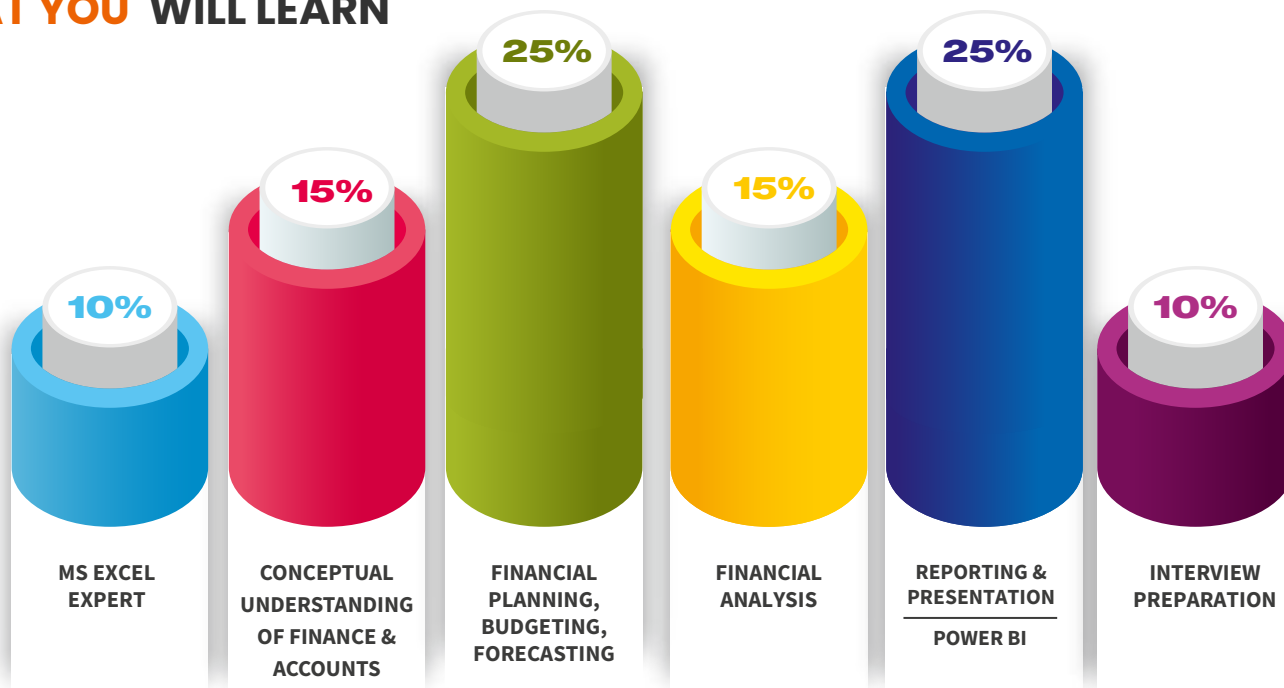
OUR RECRUITERS

AVERAGE SALARIES



WHAT YOU WILL LEARN



WHO SHOULD TAKE THIS COURSE

- Any commerce Graduates & Post Graduates (BBA, BCOM, BBM, MCOM), Non-Commerce Graduate or Post Graduate (BSC, Engineers, B.E., B. Tech, M.E., After MBA or During MBA, CFA or any degree in Finance, MBA/CFA/CA Aspirants, CPAs, ICWA, CS, Back office/operations working professional, accounting working professional, KPOs/BPOs professionals, Financial Analysts, Business Analysts, Startup founders, Bankers, Financial Controllers, CFOs, CEOs, Fund Managers, PE Fund Managers, Account Receivables (AR), Accounts Payables (AP), Record To Report (R2R), Procure to Pay (P2P), Reconciliation background professionals, housewives after a long gap of marriage or kids to make a career in Finance field, Businessman / Entrepreneur.
- Sales & Marketing skilled individuals seeking a career change to the core finance domain.

WHY FINXL

Corporate do not entertain freshers due to lack of minimum practical exposure required on job. Hence here is how FINXL bridges the skill & experience gap and prepares you to be ready-made resource available for employer!

PRACTICAL & CASE STUDY BASED TRAINING

- ✔ Industry relevant content
- ✔ **Case study** based hands on training
- ✔ **In-depth** understanding of Finance fundamentals
- ✔ Trained by **FP&A professional**
- ✔ **Individual** progress measurement
- ✔ Live internship with **Analytics Firm**
- ✔ **One on one** doubt-clearing sessions
- ✔ Life time access to FINXL LMS
- ✔ Connect **FP&A** professionals globally



INTERVIEW SKILL TRAINING

- ✔ **Mock** interviews
- ✔ Frequently asked interview questions preparation
- ✔ Resume preparation
- ✔ Job portal updation
- ✔ Assertiveness and communication
- ✔ **Financial Model** reading, Budgeting, Planning, Forecasting, Reporting, Variance Analysis & Reporting

MARKET READY

- ✔ Frequent **job** updates
- ✔ Customized **career** guidance
- ✔ **Soft skills** workshop
- ✔ Skill set mapping
- ✔ **Placement** assistance
- ✔ Scheduling **Interviews**



MODULE 1 : MS EXCEL EXPERT

- Excel Essentials & key board short-cuts
- Basic & **advance excel functions**
- Conditional Formatting, Paste Special
- Using **VLOOKUP/HLOOKUP/ Match Index**
- Using **SUMIF, COUNTIF, AND AVERAGEIF**
- **DATEDIF, YEAR, YEARFRACE & MONTH**
- **Index, Search, Choose, offset**
- **Sensitivity analysis** with Data tables
- **Pivot table**, Charting commonly used
- **Dashboards**, templates, **Macros**

MODULE 2 : DATA COLLECTION AND MODELING

- Authentic sources of financial data for companies based in the **United States, India, China, Germany**, and many more..
- **Tricks** to collect data in shortest time
- **Data collection & Data structuring** for model
- Understanding of **Financial Reports** & its types
- Types of filing **10-K, 10-Q, 8-K, 20-F** etc.
- Create Model template for 5 years historical data fo
 - Revenue Drivers
 - Cost Drivers
 - Income statement
 - Balance sheet
 - Cash flow statement
 - Dividend schedule
 - Asset Schedule
 - Debt Schedule
 - Equity Schedule

MODULE 3 : FINANCE & ACCOUNTS CONCEPTS UNDERSTANDING

- Reading, Understanding & Analyzing of
 - Income Statement
 - Cash Flow Statement
 - Balance sheet
 - Note to Accounts
- GAAP & Non-GAAP/Reported & Adjusted numbers
- Reported/Adjusted/GAAP/Non-GAAP EPS
- Restructuring & Adjusted numbers
- Pro-forma Income statement
- Restating financials for valuation and analysis
- **Finance principles and processes** (e.g., financial management concepts, corporate finance activities, etc.)
- General **financial concepts** and common **financial formulas** (e.g., time value, opportunity costs, debt structures and covenants, earnings per share, cost of capital, etc.)
- Concepts & treatment of
 - Minority/Non-controlling
 - Associates
 - Takeover
 - Merger
 - Subsidiary
 - Convertible debt/securities
 - Acquisitions
 - Interim/Annual dividend
 - Stock splits
 - Spin-offs
 - Reverse split
- Corporate actions & their treatments
 - Rights issue
 - Bonus issue
 - Reverse split
- 10 Case studies on live companies
- Make business plan of startups
- **Financial accounting** concepts, principles, and practices
- Interactions/interrelationships of common financial statements
- Basic micro-economics (e.g., marginal costs, pricing, price elasticity of supply and demand, etc.)
- Managerial accounting/reporting and cost accounting concepts

MODULE 4 : FINANCIAL MODELING & VALUATIONS

- **Interlinking** of financial statements (IS, BS, CFS)
- **Tallying** the balance sheet in **30 minutes**
- Use best practices in **Financial Model Building**
- Understand & develop a **forecasting** basis for each line of IS, BS & CFS
- Build & Forecast Advanced Schedules including the following points
 - Debt Repayment Schedule (**DRS**)
 - Fixed Assets Module (**FAM**)
 - Dividend & Equity Schedule (**ES**)

RATIOS :

- In depth conceptual understanding of financial ratios
 - **Liquidity** ratios
 - **Profitability** ratios
 - **Leverage** ratios
 - **Market value** ratios
 - **Efficiency** ratios
- Calculation and analysis of ratios on your chosen company
- Compare your company's ratios with **competitors**
- **DuPont** analysis

VALUATION:

(Understanding of various Valuation methods)

1. DISCOUNTED CASH FLOW (DCF)

- In-depth step-by-step understanding of **DCF**
- **Product/business/economic life cycle** concepts
- **Time value of money** concepts
- Understanding & calculation of **FCFF & FCFE**
- **Cost of capital (WACC)**
 - Cost of Equity using Capital Asset Pricing Model (**CAPM**)
 - Cost of Debt
 - Cost of preference shares
 - Market Premium (**R_m**)
- Risk-Free rate of return (**R_f**) for listed & non-listed SMEs
- In-depth analysis of systematic & un systematic Risks
- Beta : **Levered beta & Un-levered beta**
- Calculate beta using the last 5 years price
- **Sensitivity analysis**
- Application of **DCF** on your chosen company
- Net present value/**company value**
- '**Buy**' or a '**Sell**' rating based on analysis

MODULE 5 : FINANCIAL PLANNING

- Getting Started with **Financial Planning**
- The Accounting Framework
- **Financial modeling**
- Corporate financial planning/**strategic planning**

GATHERING & INTERPRETING INFORMATION

- Sources of historical information and **historical financial data** and **corporate structure** and functions
- Sources of information about a **company's business environment** (e.g. business models, financial ratios, and industry metrics)
- **Reading** and **interpreting** corporate annual reports
- Determining peer groups and competitors
- Basic **macro-economic concepts** used in financial planning (e.g., consumer price index, gross domestic product, exchange rates, interest rates, inflation rates, economic indicators, etc.)
- Implications of **tax policies** on projections
- Risk factors and risk management concept
- Financial and non-financial key performance indicators
- **Strategic planning** concepts and frameworks
 - SWOT Analysis
 - Porter's five forces model
 - Growth share matrix
- Determining information needs and gathering information from internal/external stakeholders and business partners
- Tools for information gathering (e.g., templates, surveys, etc.)

MODULE 6 : FINANCIAL FORECASTING

- Perform Top-Down and Bottom-up Forecasting
- Forecast a Company's Sales
- Forecast a Company's Planned Level of Production
- Calculate Net Cash Flow
- Forecast Various Types of Expenditures
- Estimate Working Capital Needs
- Carry out a Fixed Asset Roll forward
- Forecasting techniques (moving average, regression analysis, etc.)
- Essential Mechanics of the Forecasting Process
- Forecasting Selling, General & Administrative expenses
- Forecasting Balance Sheet Items

MODULE 7 : FINANCIAL BUDGETING

- Budgeting within a strategic framework
- Building a robust budgeting process
- Managing budget psychology
- A practical guide to developing budgets
- Common budgeting approaches (e.g. incremental, value-based, zero-based, etc.)
- Tracking budget performance with variance analysis (waterfall charts, etc.)
- Applied budgeting tools and techniques (Excel, solver, pivot tables, etc.)

BUDGETING CONTROL

meaning and objectives of budget and budgetary control, essentials of effective budgeting, types of budget and budget vs. actual

CAPITAL BUDGETING

Concept and process of capital budgeting, feasibility analysis, managing risk and certainty in capital budgeting, evaluation criteria under discounted and non-discounted cash flow approaches. Evaluate various investment decisions using appropriate tools and techniques and apply them to day to day business decisions.

MODULE 8 : FINANCIAL ANALYSIS

Investment Decision making- Purpose, objective and process of investment decisions and evaluation of different types of project. **New line of business, expansion of current product, backward/forward integration and application of effective financial management.**

Analysis of balance sheet, apply appropriate measures for executing and evaluating the financial results to support managerial decision-making and setting strategies

MODULE 9 : REPORTING & PRESENTATION

Corporate Financial Reporting Attributes of good corporate financial reporting for performance analysis, understanding profit & loss items, reviewing the balance sheet, variance analysis, non-performing asset analysis, identifying the cause and taking appropriate action

GLOBAL BANKING SPECIAL

- Special guide on **Global Banking KPIs**
- Basel III Financial structure (**P&L account, balance sheet**)
- Restructuring items/adjustment items & their treatments
- Additional information section
- Key performance indicator (**KPIs**) - type of KPIs and its calculation & interpretation
- Regulatory reporting
- **SEC** reporting
- **FINMA** reporting
- **MD&A** (Management discussion & analysis)
- Other external & internal reporting

MODULE 10 : POWER BI

Power BI is a business analytics service provided by Microsoft. It provides interactive visualizations with self-service business intelligence capabilities, where end users can create reports and dashboards by themselves, without having to depend on any information technology staff or database administrator. Power BI certification course shares knowledge on how it provides cloud-based BI services - known as Power BI Services, along with a desktop-based interface called Power BI Desktop. It offers Data modeling capabilities including data preparation, data discovery, and interactive dashboards.

TOPICS WE COVER

- **Introduction** to Power BI
- **Basic Components** of Power BI
- **Loading Data** in Power BI Desktop
- **Data Cleaning** using Power BI query editor
- **Transform, Clean, Shape, and Model Data** for further analysis
- Creating **Calculated Columns and Measures**
- Performing Data Analysis using **DAX**
- **Visualization Charts** in Power BI
- **Slicers and Map Visualizations**
- **Creating cards, measures, KPI, reference line, and slicers**
- Creating **reports** and **dashboard**
- **Publishing reports** on Power BI Service
- Using Power BI Service for operations on reports

MODULE 11 : PRESENTATION, REAL CASE STUDIES MOCK INTERVIEWS, SOFT SKILL

- **10+ real time** case studies
- Prepare you on **100+** frequently asked **FP&A** interview questions with answers
- Positive attitude and emotional intelligence training
- Placement manager for **1 on 1 mentor-ship**
 - **Communication** and **interpersonal** skills training
 - Conduct regular **mock interviews**
 - Work on individual strengths, weaknesses and prepare interview script
 - **Profile building** & marketing
 - Interviews scheduling & helping candidate in **placement**

BUSINESS PROFESSIONALS

SHAPE THE BUSINESS

When it comes to determining the future strategy of a business, it can be a difficult task, particularly when there are multiple variables and scenarios to consider. Questions such as how to allocate available funds, where to relocate production facilities, and which market to enter can arise. Our financial models provide a systematic approach to these intricate issues, enabling a flexible evaluation and prioritization of all available alternatives.

RUN THE BUSINESS

Whether you are managing your business as usual or through a crisis, the achievement of targeted objectives is dependent on setting realistic forecasts, managing capital spending and ensuring cash and regulatory compliance. The supporting financial models should reflect the current business operations, have the ability to measure the impact of current or future changes in key drivers and must include monitoring capabilities.

EXPAND OR DIVEST THE BUSINESS

When developing your business to implement future strategies and achieve objectives, you may consider amalgamating suitable capabilities, assets, and expertise through transactional activities. We can provide aid in assessing the effects of synergy benefits or separation/carve-outs, as well as changes in capital structures in a typical deal. The financial models used for this must be strong and equipped with the capability to rapidly test numerous scenarios and their corresponding impacts.

EXAMPLES

SHAPE THE BUSINESS

- Strategic options
- Scenario analysis
- Product/service development
- Product/service cost & profitability
- Pricing analysis
- Cost analysis
- Dashboards & scorecards
- Monte Carlo simulation

RUN THE BUSINESS

- Capital spending
- Forecasting & reporting
- Regulatory reporting compliance
- Covenant modelling

EXPAND OR DIVEST THE BUSINESS

- Acquisitions/disposals
- Mergers
- Debt restructuring

- Sensitivity analysis
- Model reviews
- Cash flow modelling & valuation
- Carve-out planning
- Carve-out tracking
- Accounting Separation
- Synergy planning
- Synergy tracking
- Integration modelling

MODE OF LEARNING

CLASSROOM / ONLINE LIVE

- ✔ 110+ hrs. rigorous training
- ✔ Trained by **FP&A Professionals**
- ✔ Active learning
- ✔ Small size batches
- ✔ **Individual progress** measurement & attention
- ✔ Online reading material
- ✔ **Real-time case studies & Practical** approach
- ✔ Complementary **eLearning**
- ✔ **Lifetime access** to FINXL LMS
- ✔ **Clear your doubts** face-to-face with Experts
- ✔ Certificate of Completion

PRE-RECORDED

- ✔ 40+ hours of audio-visual material covering **FP&A Content**
- ✔ Flexible learning - **anytime, anywhere**
- ✔ **Questions & answers** forums
- ✔ Online reading material
- ✔ **FP&A eBooks**
- ✔ **Business Case Studies** on Global companies
- ✔ **Certificate** of completion
- ✔ Connect with **FP&A professional Globally**

CERTIFICATION PROCESS



CERTIFICATION PROVIDED





FREQUENTLY ASKED QUESTIONS

Q1 Have already done /doing certain levels of FRM/CFA/MBA/CA. Should I enroll for this program?

ANS The FRM/CFA/MBA/CA certifications do not offer practical training in Financial Planning, Budgeting, Forecasting, Variance Analysis, KPIs Analysis, Financial Statements Analysis, Financial Modeling, Valuations, and interpretation of global companies. Our FP&A course, on the other hand, provides hands-on exposure by working on live clients, ensuring that you gain real-time experience.

Q2 All these content are available online. Why should I enroll for the program?

ANS In today's data age, all data is freely available online. It is not the problem of lack of access to information, but a problem of information overload that we deal with. This is just too much to grasp, and what is important gets lost in this flood of data available. We have carefully curated the content for your understanding, and created this program to help you focus on what is necessary for your preparation for these roles.

Q3 This seems to be a high intensity program. Will I be able to cope up with it while having other engagements?

ANS It is indeed a high intensity program. However, the self-paced nature allows us to customize the modules for your convenience. If you have specific engagements in college/your work, the program speed can be altered for those periods. However, this is still a rigorous program, meant for focused participants who intend to build a career in Career in Corporate Finance.

These are competitive areas, and unless we are rigorous, the learning is not possible. So we do expect that participants will be able to put in the requisite effort and hard work. Helping you manage this time well is our concern, so rest assured, you can leave that to us.

Q4 What if I miss sessions?

ANS You will never miss a lecture at FINXL! You can choose either of the two options:

- View the recorded session of the class available in your LMS
- You can attend the missed session, in any other live batch

Q5 What if I have queries after completing this course?

ANS You get lifetime access to our Support Team who will help resolve your queries during and after the course

Q6 How soon after signing up will I get access to the course content?

ANS After enrollment, you will get instant lifetime access to the LMS. You will be able to access the complete set of previous class recordings, presentations, PDFs, assignments, etc. Moreover, you will immediately get access to our support team so that you can start learning right away.

Q7 Is the course material accessible to the students even after the course training is over?

ANS Yes! All learners get lifetime access to all course material once you have enrolled.

Q8 What is the list of FINXL certificates?

ANS

- Financial modeling & Equity Research
- Financial Planning & Analysis (FP&A)
- Investment Banking (IB)
- Financial Analyst
- Startup Valuation
- Excel Expert
- Power Point Presentation
- Microsoft Power BI

Q9 Is FINXL Certification worth it?

ANS The FINXL certification holds great value in today's job market. Having this in your resume can help open up lots of job opportunities for you. Financial Planning & Analysis certified professionals draw the best packages in the finance domain which is certainly a worthy investment for your career.

Q10 How do i register for a course?

ANS You need to go to www.finxl.in website and Click on “**LOGIN**” and then Click on “**REGISTER**” Then select your course after your login and then click on “**Enroll Now**”

Q11 What are the payment options?

ANS You can pay by credit card, debit card, Google Pay, PhonePe, Paytm or net banking from all the leading banks.

Q12 Do you provide placement assistance?

ANS You will get assistance from our expert on resume preparation and job portal updation.
FINXL does provide placement assistance. It depends on prevailing market conditions & candidate profile we regularly send and arrange interviews for our candidates in erent companies.

NOTE:

FINXL does not guarantee placements. Placements are at the discretion of management and candidates should not enroll with a sole view to seek employment opportunities through us

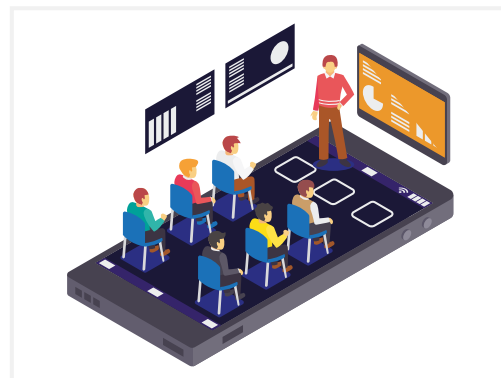
COSTING PLAN



INR 1,49,000
(CLASSROOM TRAINING)



INR 99,000
(REAL TIME ONLINE LIVE TRAINING)



INR 30,000
(ONLINE PRE-RECORDED TRAINING)

COURSE DURATION FOR CLASSROOM / ONLINE LIVE TRAINING

Intensive 110+ hours

Weekday Batch Tuesday to Thursday (3 Classes per week, 2 Hr.Each, 4.5 Months)

Weekend Batch Saturday & Sunday (2 Classes per weekend, 2.5 Hrs. Each, 4.5Months)

TRENDING COURSES

**Financial
Modeling &
Equity Research**

**Investment
Banking
(IB)**

**Financial
Analyst**

**Startup
Valuation**

**Microsoft
Power BI**

REGISTRATION AND PAYMENT

For registration and inquiries, please email us at info@finxl.in
or call us at +91 9158882688 / +91 8459024539 / +91 8109130909.

Registration will only be confirmed upon receipt of payment and registration form.

CANCELLATION POLICY

- A) Registration/Seat Booking fees if it is less than Rs. 20,000 then it is **non-refundable**. Course Full First Installment Fees paid if equal or more than Rs.20,000 then that is refundable provided that refund deadlines for credit course withdrawal are met. Anything which is below Rs. 20,000 Payment will be considered as a Seat Booking Fees which is not refundable.
- B) It is to be noted that the refund policy shall be applicable till the first 2 Training sessions/Videos of the selected course by team FINXL only, post that period NO refund shall be given for any course, under any circumstances.
- C) The request for withdrawal from the course shall be made by the student formally in an email within the refund period.
- D) FINXL ensures that all the request for the refund shall be immediately initiated from our end and will be processed within 7 working days of the request.

OTHER TERMS AND CONDITIONS:

Online training courses may not be transferred to another student.

OUR PLACEMENTS

We work end to end with the candidates for starting a career in finance by giving them access to our well knit corporate network. Few of them are mentioned below.



SHOBHIT SRIVASTAVA

PRE FINXL: ASSISTANT MANAGER, KIRLOSKAR EBARA PUMPS, PUNE
PLACEMENT: EQUITY RESEARCH ANALYST, KPMG, MUMBAI
 ★★★★★



MITHUN THAKKAR

PRE FINXL: REVAL ANALYTICS, PUNE
PLACEMENT: SR ANALYST, MOODY'S ANALYTICS, BANGLORE
 ★★★★★



HARSH NASHINE

PRE FINXL: MBA (FINANCE), MITCON
PLACEMENT: EQUITY RESEARCH ANALYST, CRISIL, PUNE
 ★★★★★



SHUBHAM PAGEY (B.E.)

PRE FINXL: JOB SEEKER! B.E.(ELECTRONICS)
PLACEMENT: FINANCIAL ANALYST, REVAL ANALYTICS, PUNE
 ★★★★★



MANOJ SHINDE

PRE FINXL: DESS EQUITY ADVISORS, GURGAON
PLACEMENT: SR. FINANCIAL ANALYST, MOODY'S ANALYTICS, GURGAON
 ★★★★★



SHAILA DIWATE

PRE FINXL: MBA (FINANCE), SINHGAD, PUNE
PLACEMENT: FINANCIAL ANALYST, REVAL ANALYTICS, PUNE
 ★★★★★



JASVINDER

PRE FINXL: REVAL ANALYTICS, PUNE
PLACEMENT: LEAD ANALYST, MOODY'S BANGLORE
 ★★★★★



TANAY LOYA (BE)

PRE FINXL: B.E. (CIVIL)
PLACEMENT: IIM, EX-SENIOR FINANCIAL ANALYST, DSII, PUNE
 ★★★★★



RISHIKA AGARWALLA

PRE FINXL: AM IN ANAND RATHI, MBA(FIN), BALAJI
PLACEMENT: FINANCIAL MODELING ANALYST, SHORE INFOTECH, HYDERABAD
 ★★★★★



GIRIJA PUJARI

PRE FINXL: B. COM., KHOPOLI
PLACEMENT: ANALYST, MORNING STAR, MUMBAI
 ★★★★★



KUSHAL KHAIRE

PRE FINXL: MBA (FINANCE), MITCON
PLACEMENT: ANALYST, DEUTSCHE BANK, PUNE
 ★★★★★



NIKHIL DESAI

PRE FINXL: RESEARCH ANALYST - NIVEZA INDIA
PLACEMENT: SR ANALYST, MOODY'S ANALYTICS, BANGLORE
 ★★★★★



SHIRIN KAMATKAR

PRE FINXL: MBA (FINANCE)
PLACEMENT: FINANCIAL ANALYST, SG ANALYTICS, PUNE
 ★★★★★



PRAGATI NAGAR

PRE FINXL: RELIANCE SECURITIES, PUNE
PLACEMENT: CRISIL, EQUITY RESEARCH ANALYST
 ★★★★★



Himanshu Badane

PRE FINXL: MBA (FINANCE), SAI BALAJI, PUNE
PLACEMENT: FINANCIAL ASSOCIATE, SG ANALYTICS
 ★★★★★



Dharmil Mehta

PRE FINXL: ANALYST-NORTHERN TRUST CORPORATION
PLACEMENT: CONSULTANT-BUSINESS VALUATIONS, CRISIL, PUNE, INDIA
 ★★★★★



AYUSHI ZAMINDAR

PRE FINXL: ICICI Bank
PLACEMENT: EQUITY RESEARCH ANALYST, WHEATON ADVISORS, PUNE
 ★★★★★



AWESH DAREKHAN

PRE FINXL: MBA, JOB SEEKER!
PLACEMENT: EQUITY RESEARCH ANALYST, DALOOPA NOIDA
 ★★★★★



TANMAY GUNJAL

PRE FINXL: OPS EXECUTIVE, GLOBEOP
PLACEMENT: FINANCIAL SERVICES, MUMBAI, CFA-2 CLEARED
PLACEMENT: CREDIT ANALYST, CRISIL, PUNE
 ★★★★★



KAMYA JETHWANI

PRE FINXL: M. COM, MBA ASPIRANT
PLACEMENT: IIM
 ★★★★★



SAMEER CHOUDHARY

PRE FINXL: CFA LEVEL 3, OPS EXECUTIVE, GLOB UP, MUMBAI
PLACEMENT: VALUATION ANALYST, PKF ADVISORY AUSTRALIA
 ★★★★★



DEVASHREE PATIL

PRE FINXL: M. COM, K.M.C COLLEGE, KHOPOLI
PLACEMENT: DATA RESEARCH ANALYST, MORNING STAR, MUMBAI
 ★★★★★



SUBRAMANIAN K

PRE FINXL: CFA LEVEL 3 CANDIDATE
PLACEMENT: EQUITY RESEARCH ANALYST, WHEATON ADVISORS, PUNE
 ★★★★★



VERSHA SINGH

PRE FINXL: STUDENT, CA INTER, 3 YEARS OF ARTICALSHIP, INDORE
PLACEMENT: EQUITY RESEARCH ANALYST, SG ANALYTICS, PUNE
 ★★★★★

OUR PLACEMENTS

We work end to end with the candidates for starting a career in finance by giving them access to our well knit corporate network. Few of them are mentioned below.



Rushit Sheth

PRE FINXL: SR ANALYST, AUXILLIUM INSURANCE BROKING PRIVATE LIMITED
PLACEMENT: FP&A SR ANALYST, VERITAS TECHNOLOGIES LLC, PUNE

★★★★★



Chinmay Singh

PRE FINXL: ACCOUNT ASSOCIATE
PLACEMENT: FINANCIAL ANALYST, ACCENTURE

★★★★★



Ronak Dosi

PRE FINXL: SENIOR ASSOCIATE, ACUITY KNOWLEDGE PARTNERS
PLACEMENT: ASSOCIATE MANAGER, FP&A INTERNATIONAL, ELANCO

★★★★★



Tejas Disal

PRE FINXL: JOB SEEKER!
PLACEMENT: SR FP&A, UNITED BANK OF SWITZERLAND (UBS), PUNE

★★★★★



Ankush Jain

PRE FINXL: CONSULTANT - SG ANALYTICS
PLACEMENT: PROJECT CONSULTANT - ERNST YOUNG (EY)

★★★★★



Nakul Sadhu

PRE FINXL: UPS, OPERATIONS
PLACEMENT: FP&A, CAPGEMINI, PUNE

★★★★★



Jitendra Wani

PRE FINXL: CONSULTANT - CAPGEMINI
PLACEMENT: SR. ANALYST, TRANSUNION PUNE

★★★★★



Thiagarajan N

PRE FINXL: TEAM LEAD, ACCENTURE SERVICES, CHENNAI
PLACEMENT: LEAD FINANCIAL ANALYST (FP&A), THOMSON REUTERS

★★★★★



Manisha Gangwani

PRE FINXL: CLIENT DELIVERY ASSOCIATE - ACUITY KNOWLEDGE
PLACEMENT: CREDIT RATING ANALYST - INFOMERICS VALUATION

★★★★★



Umang Rabadia

PRE FINXL: MBA (FINANCE), SIIB, PUNE
PLACEMENT: CONSULTANT FSA, INFOSYS, PUNE

★★★★★



Abhijeet Das

PRE FINXL: MBA (FINANCE)
PLACEMENT: FINANCIAL ANALYST, NOMURA, MUMBAI

★★★★★



Priyanka Ravindra Singh

PRE FINXL: CAPITA, PUNE
PLACEMENT: SENIOR ASSOCIATE, FP&A, COMMUNITY BRANDS, PUNE

★★★★★



Kushal Khaire

PRE FINXL: MBA (FINANCE), MITCON
PLACEMENT: ANALYST, DEUTSCHE BANK, PUNE

★★★★★



Vijayalaxmi Kambar

PRE FINXL: ACCOUNT DEPT. REAL ESTATE COMPANY
PLACEMENT: FP&A ANALYST, TRANSUNION PUNE

★★★★★



Akshay Kamble

PRE FINXL: FACTSHEET INC
PLACEMENT: FINANCIAL ANALYST (FPA), DANFOSS, PUNE

★★★★★



Ketan Kolhapure

PRE FINXL: SUD LIFE LTD
PLACEMENT: SR ANALYST, FP&A, ACCENTURE

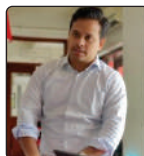
★★★★★



Aakanksha Patil

PRE FINXL: CLIENT SUPPORT, BPO INDORE
PLACEMENT: FP&A ANALYST, TRANSUNION PUNE

★★★★★



Rakesh Sharma

PRE FINXL: ENTREPRENEUR
PLACEMENT: LEAD FP&A, EVERSAAR, PUNE

★★★★★



Manisha Mirani

PRE FINXL: CAPITA INDIA PVT. LTD
PLACEMENT: SR FP&A, ROCKET SOFTWARE, PUNE

★★★★★



Madhura Jugdar

PRE FINXL: AUDIT INTERNSHIP EY
PLACEMENT: FP&A ANALYST, QUALYS PUNE

★★★★★

And Many More....

TRENDING COURSES

**Financial
Analyst**

**Investment
Banking
(IB)**

**Financial
Planning &
Analysis (FP&A)**

Excel Expert

**Microsoft
Power BI**



**Our Students Reviews
4.9 Out of 5**



Pay using any UPI app



STAY TUNED WITH US

Get newsletter, Job Openings, Financial Models, Research Reports, Free Course Materials and more !

 **+91 91588 82688 / +91 84590 24539 / +91 81091 30909**

 **info@finxl.in**

 **www.finxl.in**



Pune (MH) INDIA

Office - 310,311, Magnolia Business Center, Baner-Pashan Link Road, Baner, Pune - 411021.